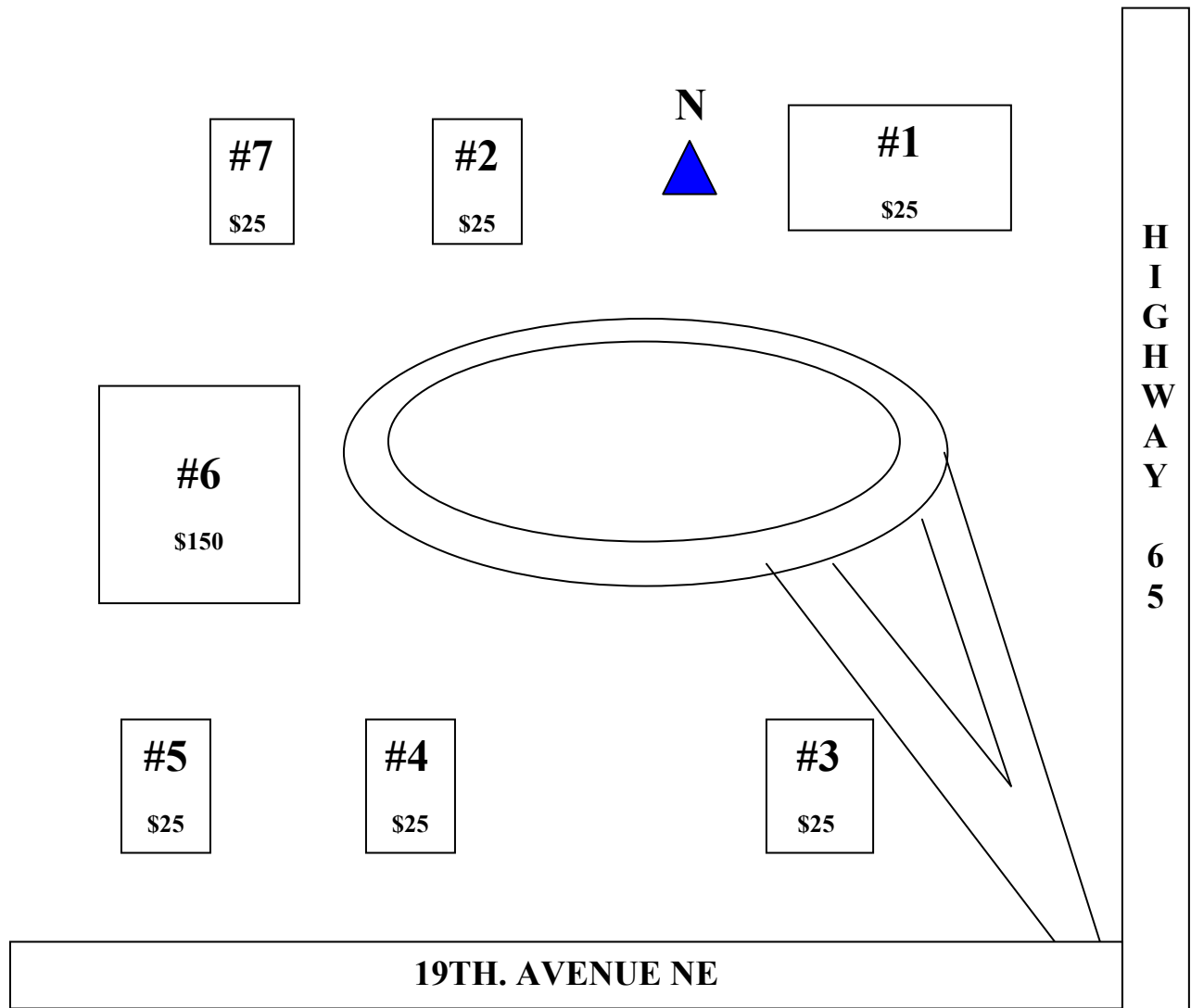


HARRIMAN PARK SHELTER LOCATIONS



TO RESERVE COUNTY SHELTERS: 641-456-4375
TO RESERVE BEEDS LAKE LODGE/SHELTERS:
877-427-2757 or www.reserveiaparks.com

HARRIMAN PARK (324 19TH AVENUE NE) Effective 03/09/11
 EAST PARK CONCESSION (1000 BLOCK HWY 3 EAST)

Harriman Shelter #6 & East Park Concession - \$150.00 (\$50 per day + \$100 Deposit)
Harriman Shelters #1-5, #7 - \$25.00 Deposit

Reservation/Rental Agreement must be signed by authorized adult and total fees paid to secure a reservation. Deposit refunds are mailed to customers following City Council approval & satisfactory inspection of facility by City staff & prompt return of facility key(s).

HARRIMAN RESTROOM KEY MADE AVAILABLE ONLY TO FACILITY RESERVATION CUSTOMERS.
 RESTROOM ACCESS BY CUSTOMERS TO OTHERS BESIDES THEIR GUESTS IS DISCOURAGED.